

# Universal Management Suite (UMS)



## UMS5

Universal Management Suite

### PROFILE

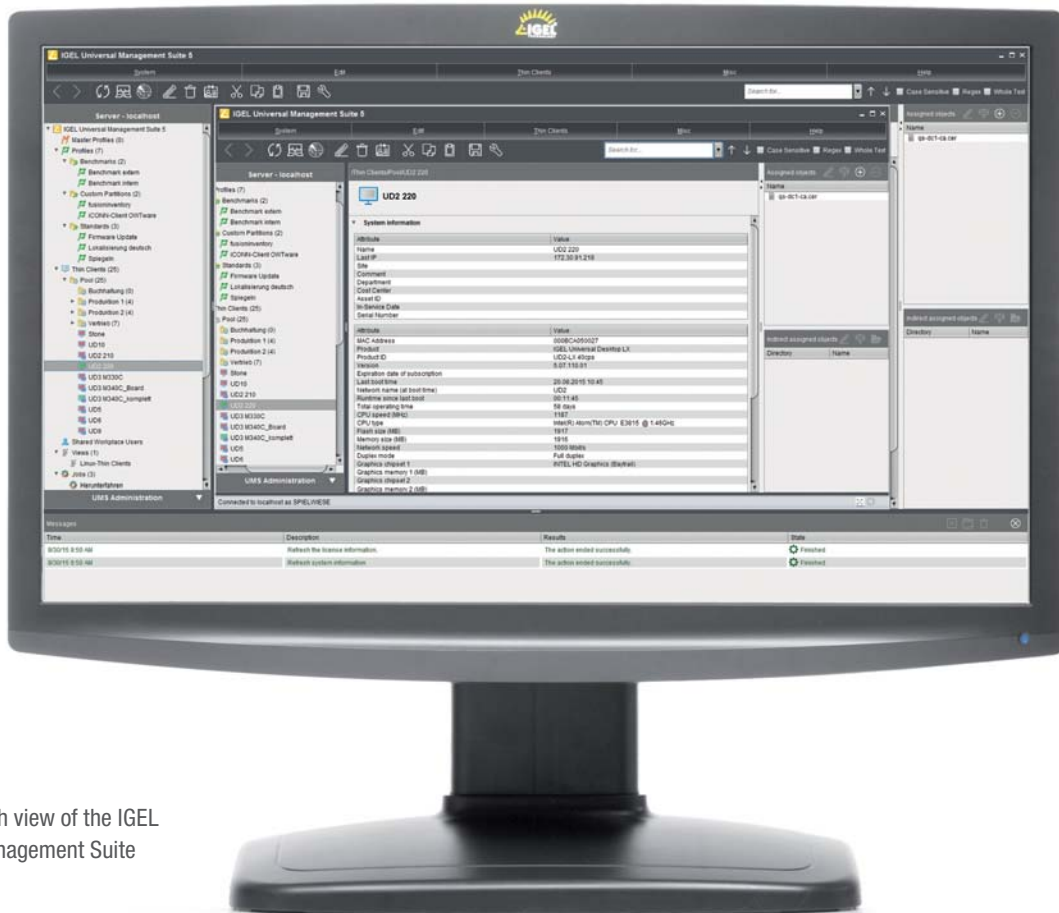
The IGEL Universal Management Suite (UMS) is a user-friendly and extremely efficient piece of software. It allows IGEL thin and zero clients as well as PCs, notebooks and thin clients from other manufacturers (converted into software thin clients using the Universal Desktop Converter (UDC) or with the Unified Management Agent (UMA) installed) to be remotely administered. It also helps to minimize support costs. With its open, network-friendly structure, it can be incorporated quickly and easily into the existing company infrastructure and offers maximum security and reliability.

### TYPICAL USES

- ▶ **Automatically setting up** thin and zero clients with the right profile when they first attach to the network
- ▶ **Changing the settings** of the device or its local protocols and software tools
- ▶ **Re-imaging** devices mid-life when new firmware becomes available, diagnostics and support

### INTRODUCTION

With the **IGEL Universal Management Suite (UMS)**, managed workspaces can be administered quickly, easily and securely. In order to allow comprehensive client standardization, thin clients, zero clients and software thin clients, as well as fat clients with Windows 7 can be included in the remote management. This is possible thanks to the optionally licensable Unified Management Agent (UMA) for Windows 7. For straightforward integration into the existing IT environment, the UMS supports not only a wide range of operating systems but also databases and directory services such as Microsoft Active Directory. The UMS comes supplied with all IGEL thin client solutions. In combination with the high-performance, reliable IGEL hardware, you benefit from the most advanced managed workspace solution currently available on the market.



IGEL UD9 with view of the IGEL Universal Management Suite

# THE ADVANTAGES OF THE IGEL UNIVERSAL MANAGEMENT SUITE

## ECONOMICAL AND USER-FRIENDLY

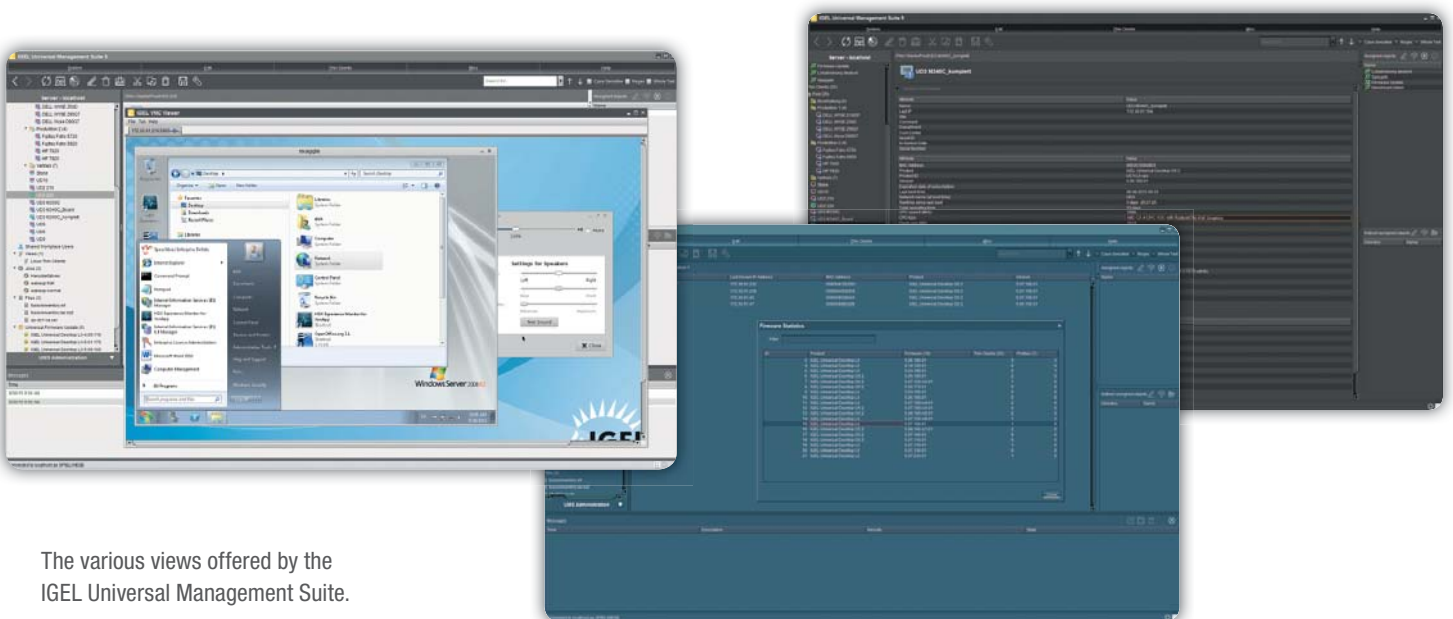
- ▶ **Fast installation**  
This is carried out with the help of an installation wizard and takes just 20 minutes.
- ▶ **Easy to administer**  
Most hardware and software settings can be made with just a few clicks of the mouse.
- ▶ **Uniform user interface**  
The user interface for UMS is the same as for the local thin and zero client configuration. The additional remote management functions give the administrator complete control in the familiar, proven environment.
- ▶ **No scripting necessary**  
Although scripting is supported, you will only need it for controlling the thin client configuration in the most exceptional circumstances.
- ▶ **Asset management**  
Automatic capture of all your hardware information, licensed features and installed hotfixes.
- ▶ **Comment fields**  
For various information such as location, installation date and inventory number.

## OPEN ARCHITECTURE

- ▶ **Support for numerous operating systems**  
The UMS can be run on all known versions of Microsoft Windows Server and Linux.
- ▶ **Access is independent of the operating system**  
The configuration console operates on the basis of Java and enables the system to be administered from any device with the Java Runtime Environment.

## SECURE AND ROBUST

- ▶ **Encrypted communication**  
Certificate-based SSL/TLS-encrypted communication between remote management servers and clients to protect the system against unauthorized reconfiguration of the equipment.
- ▶ **Failsafe upgrade function**  
If the thin or zero client machine fails (e.g. power outage or loss of the network connection) while the update is in progress it will still remain useable. The update process will be completed the next time the machine is rebooted.



The various views offered by the IGEL Universal Management Suite.

## NETWORK-FRIENDLY

- ▶ **Based on standard communications protocol**  
There is no need to reconfigure the routers and firewalls because they use HTTP and FTP.
- ▶ **Buddy update**  
IGEL Linux thin clients that have already been updated can be used as update servers for other thin clients (e.g., in branch offices).
- ▶ **Partial update**  
New updates or applications can be implemented via the Custom Partition (on IGEL Linux thin clients) and the Partial Update Packages (on IGEL Windows Standard Embedded thin clients) respectively. This means that there is no need to transmit the entire image over the network.

## SCALABLE AND EFFICIENT

- ▶ **Support for extensive environments**  
The IGEL UMS can be scaled to accommodate several thousand thin and zero clients (requires High Availability Extension).
- ▶ **Group and profile-based administration**  
The thin and zero clients within a given organizational unit can be administered very easily by means of profiles (e.g., if an employee moves to another department, the administrator can change their settings with a simple drag-and-drop).

- ▶ **Trouble-free roll out**  
IGEL clients can be automatically assigned to a group on the basis of either the relevant subnetwork or a list of MAC addresses made available by IGEL.
- ▶ **Comprehensive support for all configurations**  
Most IGEL client settings, such as device or session configurations, can be processed via the mouse-enabled UMS user interface.
- ▶ **Transfer of administrative rights**  
Large organizations can authorize a number of system administrators for different control and authorization areas.
- ▶ **Task planning**  
Maintenance tasks can be scheduled at night so that day-to-day operations are not disrupted.
- ▶ **VNC shadowing**  
Members of the IT support team have remote access to thin and zero client screens to enable them to rapidly identify problems and demonstrate solutions directly to users. Optionally, SSL-based VNC shadowing including user-based logging is available at no extra cost.
- ▶ **Linking to enterprise management systems**  
With the help of the optional IGEL Management Interface (IMI), the UMS can be linked to existing enterprise management systems (e.g. Microsoft SCCM or IBM Tivoli) via a standardized REST API.



The IGEL Universal Management Suite is bundled with every IGEL product.

# IGEL UNIVERSAL MANAGEMENT SUITE (UMS) SPECIFICATIONS

## SUPPORTED PLATFORMS

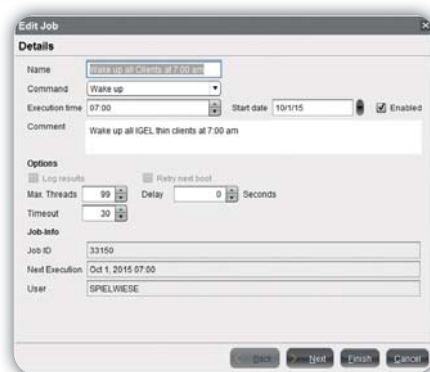
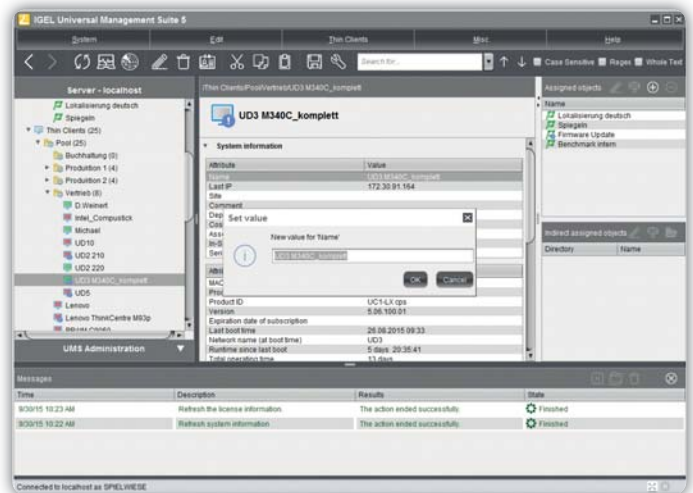
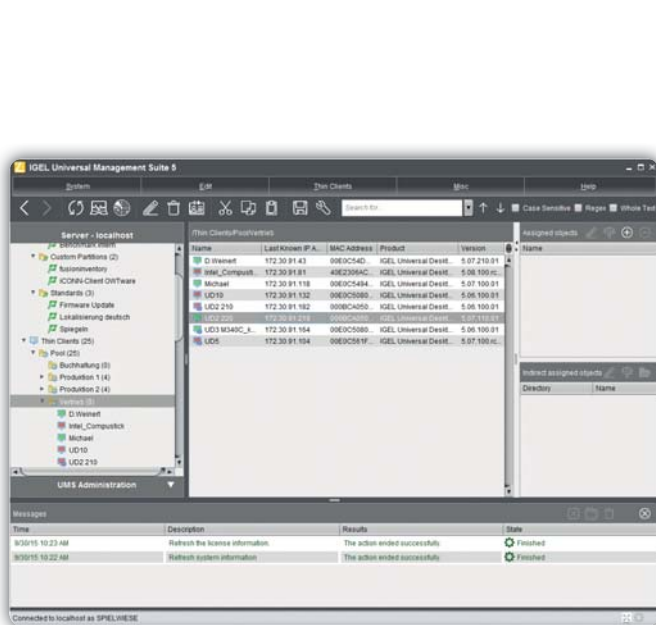
UMS Server	<ul style="list-style-type: none"> <li>Microsoft Windows Server 2008 / 2008 R2 / 2012 / 2012 R2 (x86, x86_64)</li> <li>Ubuntu 10.04, 12.04, 14.04 (x86, x86_64)</li> <li>Redhat 6 (32 bit, x86)</li> </ul>
UMS Console	<ul style="list-style-type: none"> <li>Microsoft Windows 7, Windows 8.x, Windows 10</li> <li>Ubuntu 10.04, 12.04, 14.04</li> <li>Redhat 6 (32 bit)</li> </ul>
Databases	<ul style="list-style-type: none"> <li>Oracle 10g / 11g / 12c (with version 4.09.100) – Cluster Support</li> <li>Microsoft SQL Server 2008 / 2008 R2 / 2012 / 2014 (with version 4.08.100) – Cluster Support</li> <li>PostgreSQL Version 8.2 and above</li> <li>Apache Derby 10</li> </ul>

## SECURITY FEATURES

- ▶ SSL/TLS communication
- ▶ User / password authentication
- ▶ Active Directory groups can be used for access rights management
- ▶ Local client certificates
- ▶ Full and reliable backup functionality

## SUPPORTED LANGUAGES

- ▶ English
- ▶ German
- ▶ French
- ▶ Dutch
- ▶ Chinese (Simplified, Traditional)
- ▶ Spanish
- ▶ Italian
- ▶ Japanese



Top left: Classic view of the IGEL Universal Management Suite  
 Top right: Here you see the thin clients, each with their settings and assigned profiles  
 Right: The execution of regular jobs can be suspended on particular days – e.g. public holidays

IGEL is a registered trademark of IGEL Technology GmbH. All hardware and software names are registered trademarks of the respective manufacturers. Errors and omissions excepted. Subject to change without notice.  
 ©04/2016 IGEL Technology | 85-EN-8-12 | WEEE-Reg.-Nr. DE 79295479

IGEL Technology Ltd | info@igel.com | www.igel.co.uk | www.igel.com/en

GERMANY Augsburg Bremen Mainz	AUSTRALIA Sydney	AUSTRIA Vienna	BELGIUM Leuven	CHINA Beijing Shanghai	FRANCE Paris	THE NETHERLANDS Utrecht	SWEDEN Vänersborg	SWITZERLAND Zurich	UNITED KINGDOM Reading	UNITED STATES Cincinnati New York
--	---------------------	-------------------	-------------------	------------------------------	-----------------	----------------------------	----------------------	-----------------------	---------------------------	---